

FOR SALE OR LEASE MS VAN BUREN II BUSINESS PARK

DEVELOPED BY: SILAGI DEVELOPMENT
& MANAGEMENT, INC. // 1.805.402.4515

SDM

VAN BUREN BLVD. & MERIDIAN PKWY., RIVERSIDE, CA
9 Industrial/Showroom Buildings Totaling ±129,413 SF



Please Contact:

WWW.SILAGISOCAL.COM

**LEE &
ASSOCIATES**
COMMERCIAL REAL ESTATE SERVICES

R. MARIO CALVILLO
DRE#: 01911573 // 951.276.3657
MCALVILLO@LEERIVERSIDE.COM

GARRY JENKINS
DRE#: 02008115 // 951.276.3621
GJENKINS@LEERIVERSIDE.COM

No warranty or representation has been made to the accuracy of the foregoing information. Terms of sale or lease and availability are subject to change or withdrawal without notice. Lee & Associates Commercial Real Estate Services, Inc. - Riverside. 3240 Mission Inn Avenue, Riverside, CA 92507 | Corporate DRE#: 01048055

FOR SALE OR LEASE

MS VAN BUREN II

BUSINESS PARK

DEVELOPED BY: SILAGI DEVELOPMENT
& MANAGEMENT, INC. // 1.805.402.4515

SDM



HPA
architecture

Building #	1	2	3	4	5	6	7	8	9	Retail
Unit SF	5,000 to 27,378	9,420	14,140	8,980	7,180	2,400 to 9,600	3,000 to 12,000	3,000 to 12,000	3,300 to 19,661	1,800 to 9,054

Please Contact:

WWW.SILAGISOCAL.COM

LEE & ASSOCIATES
COMMERCIAL REAL ESTATE SERVICES

R. MARIO CALVILLO
DRE#: 01911573 // 951.276.3657
MCALVILLO@LEERIVERSIDE.COM

GARRY JENKINS
DRE#: 02008115 // 951.276.3621
GJENKINS@LEERIVERSIDE.COM

No warranty or representation has been made to the accuracy of the foregoing information. Terms of sale or lease and availability are subject to change or withdrawal without notice. Lee & Associates Commercial Real Estate Services, Inc. - Riverside. 3240 Mission Inn Avenue, Riverside, CA 92507 | Corporate DRE#: 01048055

FOR SALE OR LEASE MS VAN BUREN II BUSINESS PARK

DEVELOPED BY: SILAGI DEVELOPMENT
& MANAGEMENT, INC. // 1.805.402.4515



Building #	1	2	3	4	5	6	7	8	9	Retail
Total Building SF	27,378	9,420	14,140	8,980	7,180	9,600	12,000	12,000	19,661	9,054
Acres	1.88	0.48	0.82	0.68	0.45	0.73	1.12	1.19	2.11	1.39
Auto Parking	61	20	25	17	15	29	50	37	103	41
Zoning	MU	MU	MU	MU	MU	MU	MU	MU	MU	MU
Clear Height	16'	16'	16'	16'	16'	16'	16'	16'	16'	16'
Power (AMPS) - 277/480 Volt (Expandable)	200 Per Unit	400	400	400	200 Per Unit	200 Per Unit	200 Per Unit	200 Per Unit	200 Per Unit	200 Per Unit
GL Doors (12x14)	1 Per Unit	1 Per Unit	1 Per Unit	1 Per Unit	1 Per Unit	1 Per Unit	1 Per Unit	1 Per Unit	1 Per Unit	N/A
ESFR Sprinkler	Yes	Yes	Yes	Yes	Yes	Yes	Yes	Yes	Yes	Yes
Master Plan Association	Yes	Yes	Yes	Yes	Yes	Yes	Yes	Yes	Yes	Yes

Please Contact:

WWW.SILAGISOCAL.COM



R. MARIO CALVILLO
DRE#: 01911573 // 951.276.3657
MCALVILLO@LEERIVERSIDE.COM

GARRY JENKINS
DRE#: 02008115 // 951.276.3621
GJENKINS@LEERIVERSIDE.COM

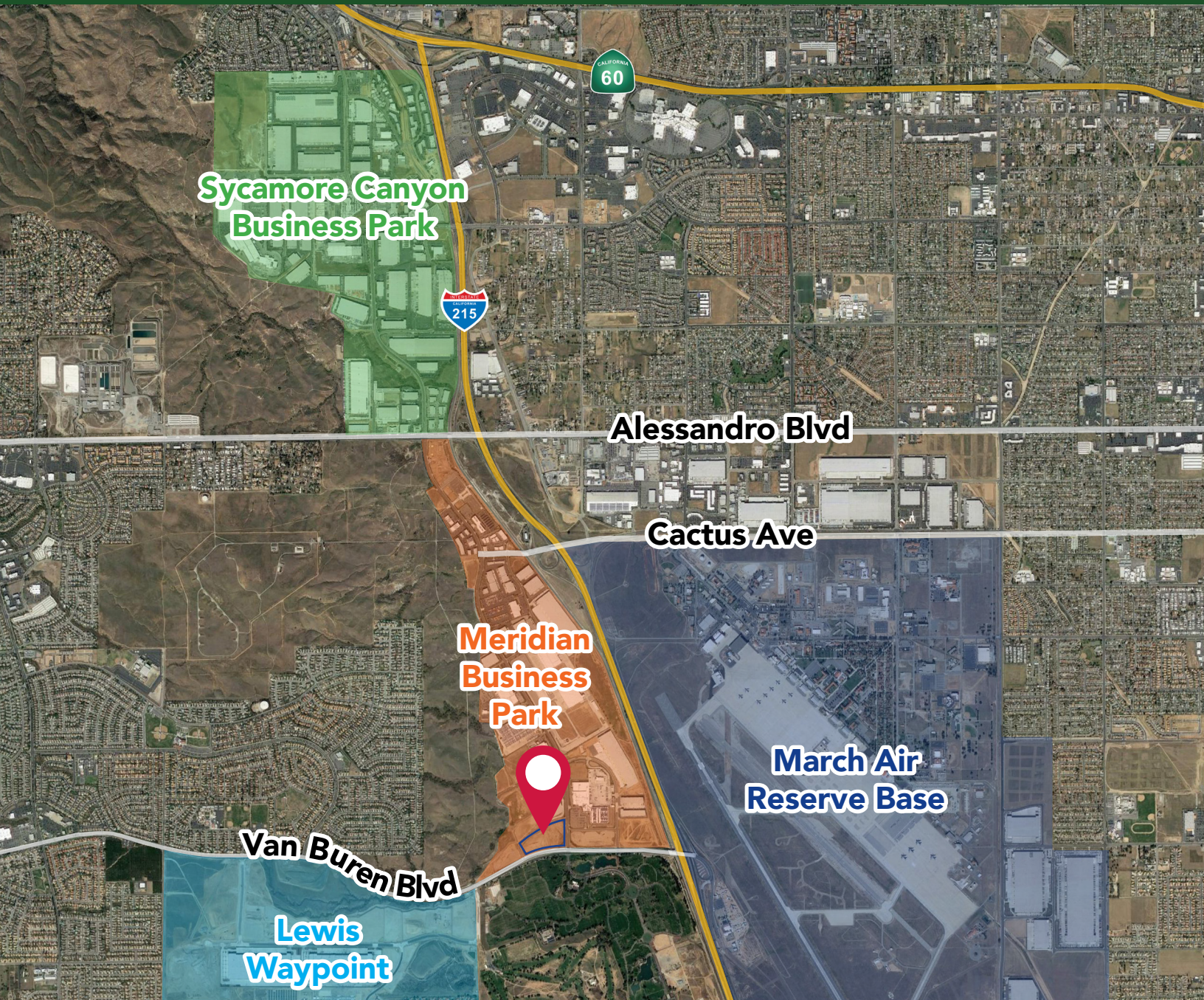
No warranty or representation has been made to the accuracy of the foregoing information. Terms of sale or lease and availability are subject to change or withdrawal without notice. Lee & Associates Commercial Real Estate Services, Inc. - Riverside. 3240 Mission Inn Avenue, Riverside, CA 92507 | Corporate DRE#: 01048055

FOR SALE OR LEASE

MS VAN BUREN II BUSINESS PARK

DEVELOPED BY: SILAGI DEVELOPMENT
& MANAGEMENT, INC. // 1.805.402.4515

SDM



Please Contact:

WWW.SILAGISOCAL.COM

LEE & ASSOCIATES
COMMERCIAL REAL ESTATE SERVICES

R. MARIO CALVILLO
DRE#: 01911573 // 951.276.3657
MCALVILLO@LEERIVERSIDE.COM

GARRY JENKINS
DRE#: 02008115 // 951.276.3621
GJENKINS@LEERIVERSIDE.COM

No warranty or representation has been made to the accuracy of the foregoing information. Terms of sale or lease and availability are subject to change or withdrawal without notice. Lee & Associates Commercial Real Estate Services, Inc. - Riverside. 3240 Mission Inn Avenue, Riverside, CA 92507 | Corporate DRE#: 01048055