



## 1425 S Moore Road

East Ridge, TN 37412

### Property Features

- Total Building Size: 10,290 SF
  - Suite B: 1,620 SF - Vacancy
  - Suite C: 1,716 SF - Vacancy

### Comments

Located in the heart of East Ridge, the multi-tenant office center is easily accessible to I-75 & I-24. Volkswagen and Amazon Plants are a couple miles up I-75.

East Ridge is soon to be the home of the Red Wolves Pro-Soccer stadium.

**Lease Price: \$12 PSF (MG)**



For more information:

**Eli Schwartz**

+1 423 308 3770 • eli@charterre.com

# PROPERTY PHOTOS

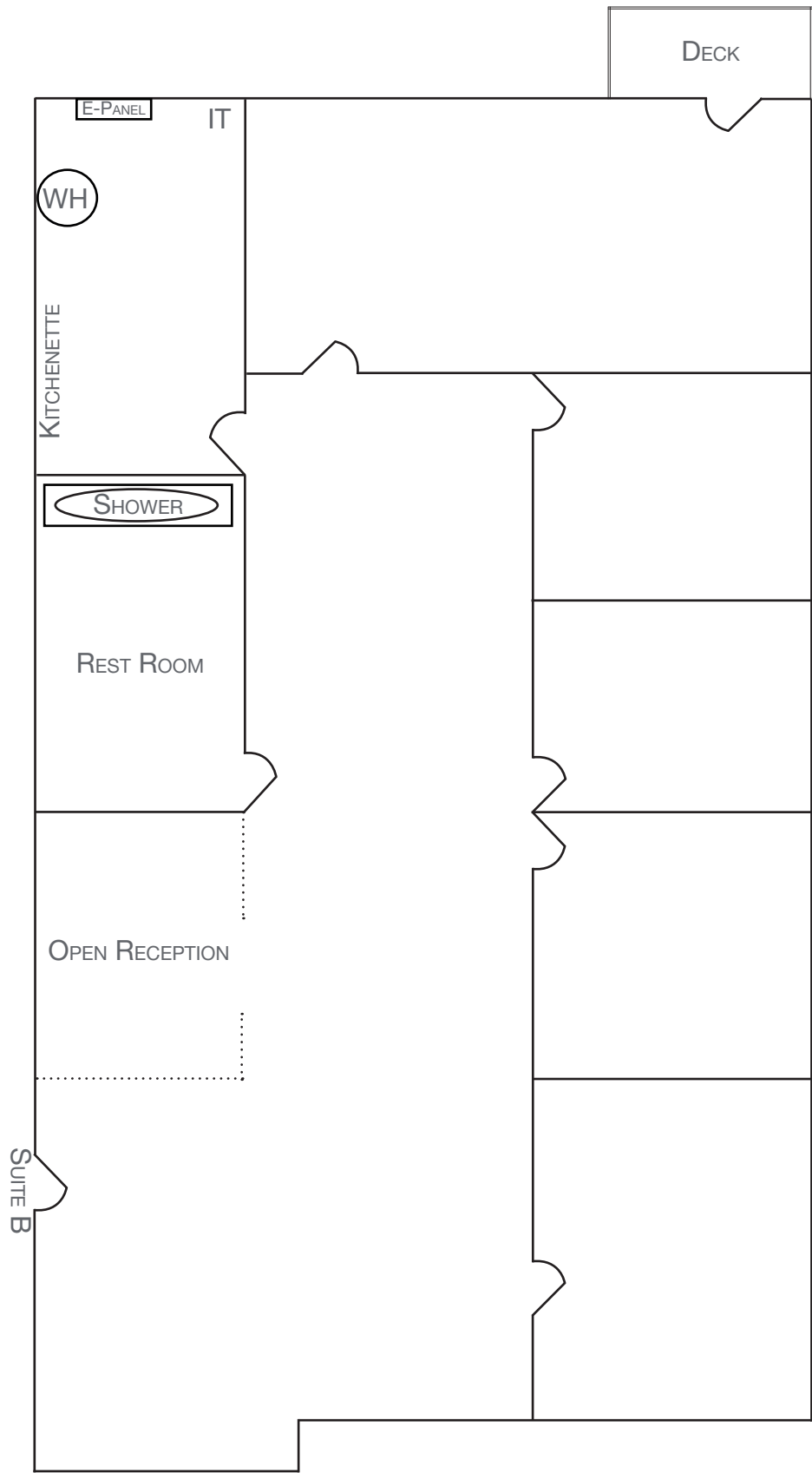
1425 S Moore Road | Suite B



# FLOOR PLAN

1425 S Moore Road | Suite B

1,620 SF | *\*Not to Scale*





# PROPERTY PHOTOS

1425 S Moore Road | Suite C



# FLOOR PLAN

1425 S Moore Road | Suite C

1,716 SF | *\*Not to Scale*

