



**COMMERCIAL REAL ESTATE**

RETAIL PROPERTY FOR SALE OR LEASE



# Oxford Commons

5442 Thomasville Road  
Tallahassee, FL 32312

**BRAD PARKER**

Partner/Broker  
850.566.2629  
brad@tlgproperty.com

**BRYAN CURETON**

Sales Associate  
850.545.3687  
bryan@tlgproperty.com

**TLG REAL ESTATE SERVICES**

3520 Thomasville Road, Suite 200  
Tallahassee, FL 32309  
O: 850.385.6363



## EXECUTIVE SUMMARY

## OXFORD COMMONS

5442 THOMASVILLE ROAD, TALLAHASSEE, FL 32312



## OFFERING SUMMARY

<b>Sale Price:</b>	\$4,100,000.00 (Entire Property)
<b>Building Size</b>	8,807 SF
<b>Lease Rate:</b>	\$26.00 SF (As-Is)
<b>Available For Lease:</b>	3,000 SF
<b>Lot Size:</b>	1.56 Acres
<b>Year Built:</b>	2016
<b>Zoning:</b>	PUD
<b>APN:</b>	14-28-40 A-0010

**[Click Here for Zoning Information](#)**

## PROPERTY OVERVIEW

Investment or Leasing Opportunity! Oxford Commons, built in 2016 and home to Thomasville Road Dental Care and Willie Jewell's Bar-B-Q. High visibility retail center conveniently located on Thomasville Road just South of Kerry Forest Parkway.

3,000 sf currently vacant and for lease. The owner may consider subdividing the property into a condo association to sell individual units. Tenants include Thomasville Road Dental Care and Willie Jewell's Bar-B-Q. Surrounded by retailers including Walmart, Starbucks, CVS, ABC Fine Wine & Spirits, Murphy Oil, and many more. Conveniently located on Thomasville Road/US 319 just South of Kerry Forest Parkway. 47 parking spots available in addition to 2 ADA compliant spaces. Traffic Counts: Thomasville Road - 46,443 and Kerry Forest Parkway - 11,011

## LOCATION OVERVIEW

Located North along Thomasville Road just South of Kerry Forest Parkway in Tallahassee, FL.

**Brad Parker**  
850.566.2629  
brad@tlgproperty.com

**Bryan Cureton**  
850.545.3687  
bryan@tlgproperty.com

**TLG REAL ESTATE SERVICES**  
3520 Thomasville Road, Suite 200, Tallahassee, FL 32309  
850.385.6363







ADDITIONAL PHOTOS

## OXFORD COMMONS

5442 THOMASVILLE ROAD, TALLAHASSEE, FL 32312



**Brad Parker**  
850.566.2629  
brad@tlgproperty.com

**Bryan Cureton**  
850.545.3687  
bryan@tlgproperty.com

**TLG REAL ESTATE SERVICES**

3520 Thomasville Road, Suite 200, Tallahassee, FL 32309

850.385.6363

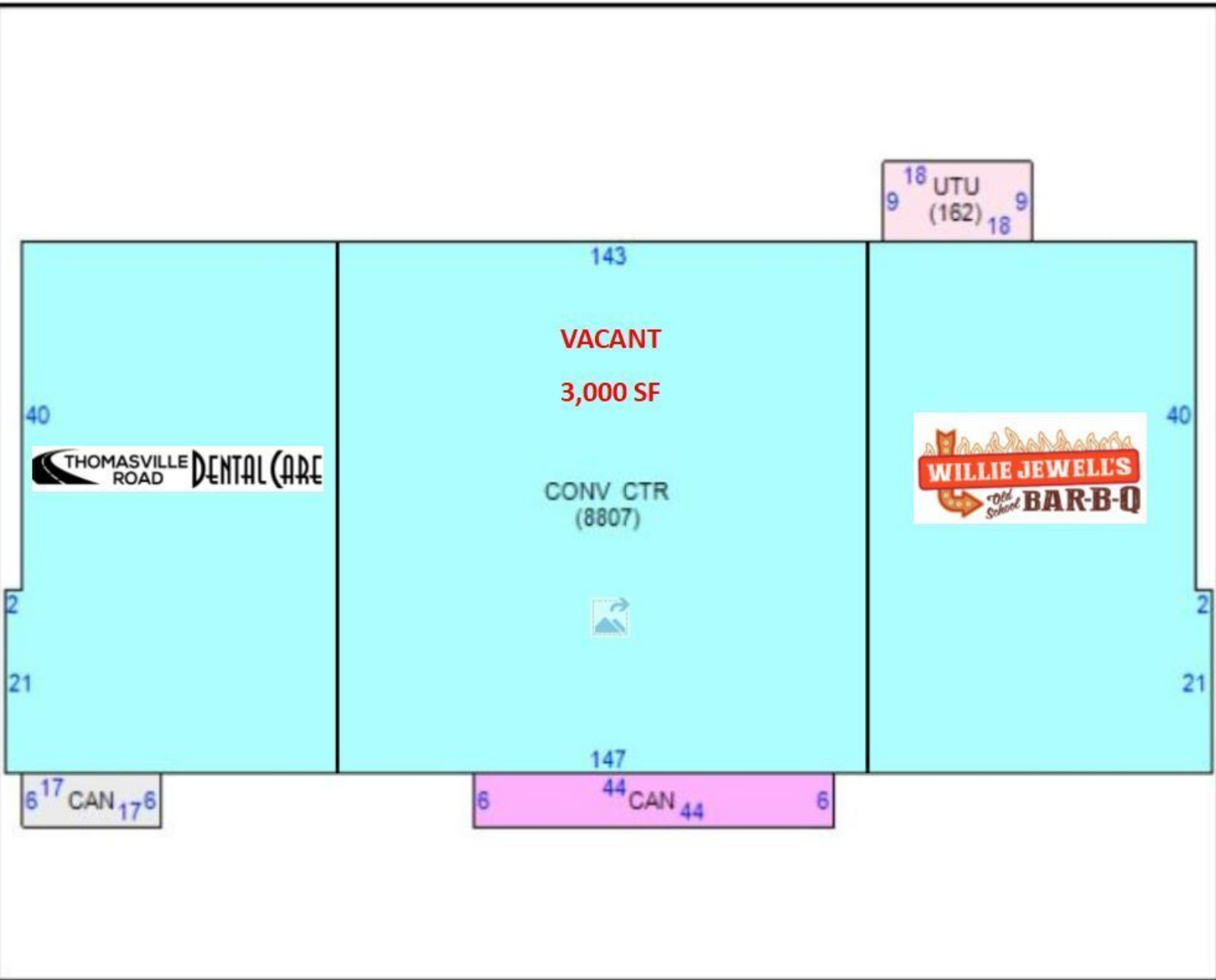




BUILDING SKETCH

# OXFORD COMMONS

5442 THOMASVILLE ROAD, TALLAHASSEE, FL 32312



**Brad Parker**  
850.566.2629  
brad@tlgproperty.com

**Bryan Cureton**  
850.545.3687  
bryan@tlgproperty.com

**TLG REAL ESTATE SERVICES**  
3520 Thomasville Road, Suite 200, Tallahassee, FL 32309  
850.385.6363







RETAILER MAP

# OXFORD COMMONS

5442 THOMASVILLE ROAD, TALLAHASSEE, FL 32312



**Brad Parker**  
850.566.2629  
brad@tlgproperty.com

**Bryan Cureton**  
850.545.3687  
bryan@tlgproperty.com

**TLG REAL ESTATE SERVICES**  
3520 Thomasville Road, Suite 200, Tallahassee, FL 32309  
850.385.6363



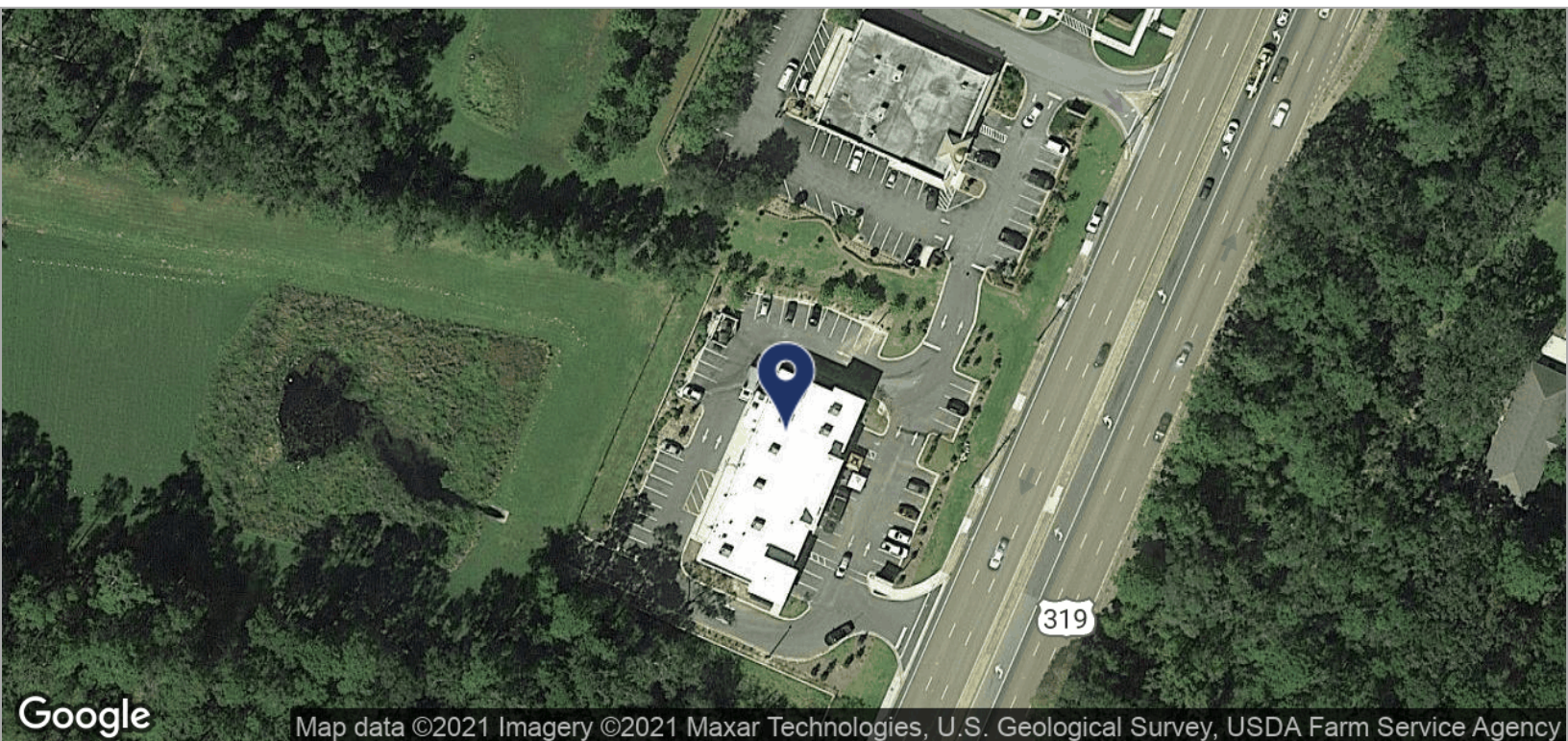
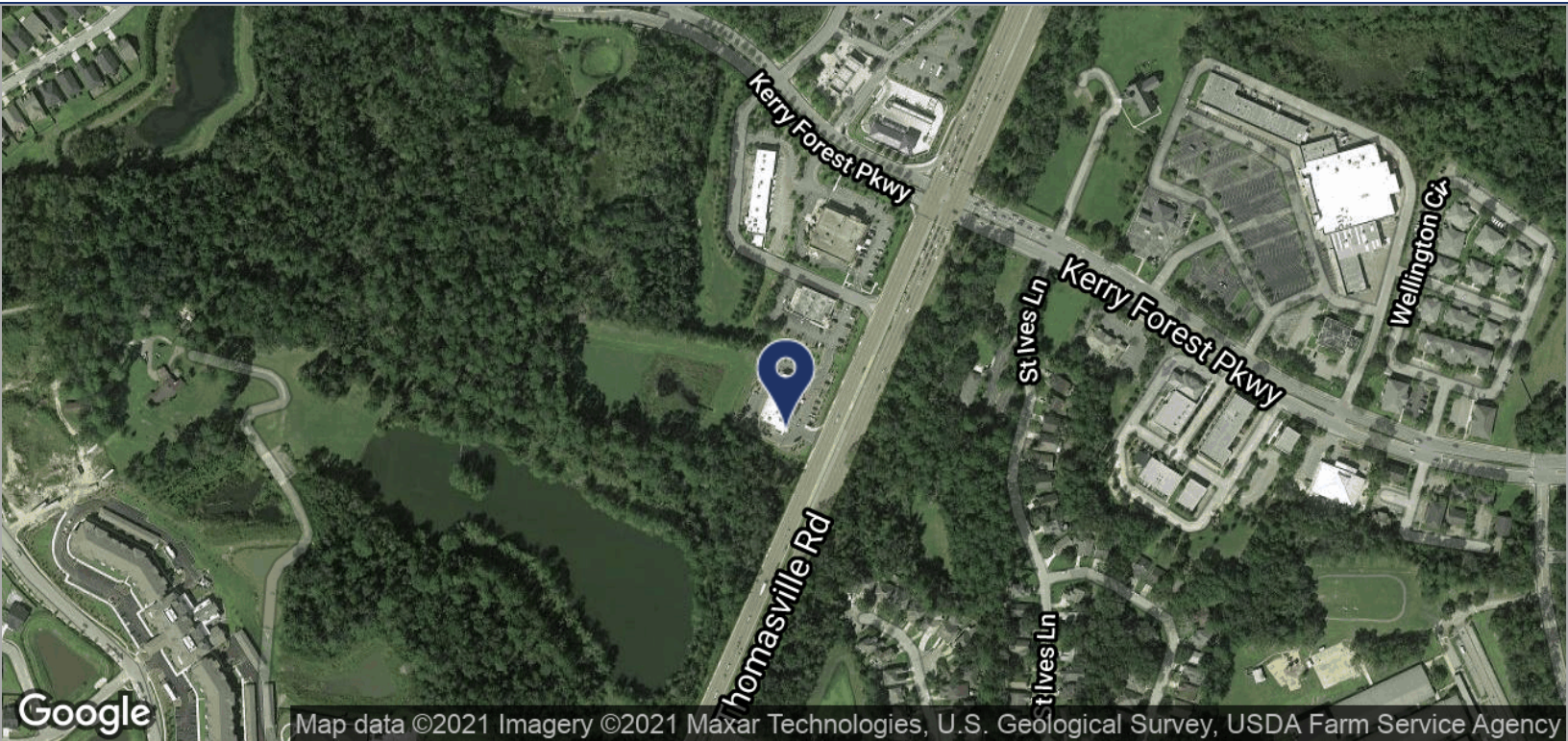




LOCATION MAPS

# OXFORD COMMONS

5442 THOMASVILLE ROAD, TALLAHASSEE, FL 32312



**Brad Parker**  
850.566.2629  
brad@tlgproperty.com

**Bryan Cureton**  
850.545.3687  
bryan@tlgproperty.com

**TLG REAL ESTATE SERVICES**  
3520 Thomasville Road, Suite 200, Tallahassee, FL 32309  
850.385.6363



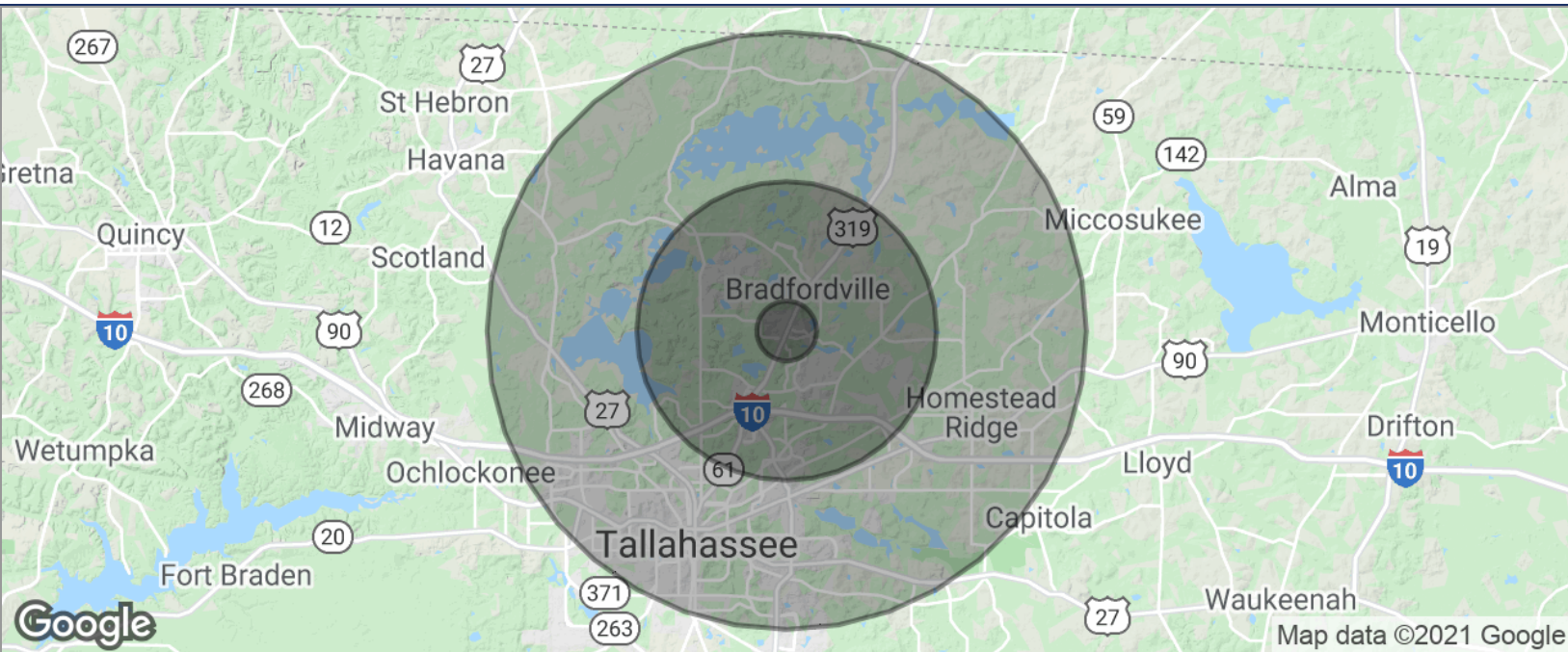




## DEMOGRAPHICS MAP

## OXFORD COMMONS

5442 THOMASVILLE ROAD, TALLAHASSEE, FL 32312

**POPULATION**

	<b>1 MILE</b>	<b>5 MILES</b>	<b>10 MILES</b>
TOTAL POPULATION	3,967	62,563	246,944
MEDIAN AGE	43.6	41.6	32.8
MEDIAN AGE (MALE)	43.4	41.2	32.2
MEDIAN AGE (FEMALE)	43.7	42.2	33.4

**HOUSEHOLDS & INCOME**

	<b>1 MILE</b>	<b>5 MILES</b>	<b>10 MILES</b>
TOTAL HOUSEHOLDS	1,516	24,986	101,024
# OF PERSONS PER HH	2.6	2.5	2.4
AVERAGE HH INCOME	\$108,706	\$104,664	\$64,128
AVERAGE HOUSE VALUE	\$334,291	\$345,408	\$263,191

\* Demographic data derived from 2010 US Census

**Brad Parker**  
850.566.2629  
brad@tlgproperty.com

**Bryan Cureton**  
850.545.3687  
bryan@tlgproperty.com

**TLG REAL ESTATE SERVICES**  
3520 Thomasville Road, Suite 200, Tallahassee, FL 32309  
850.385.6363

