

# 4.96 AC COMMERCIAL LAND FOR SALE

NWC Varner Rd. & Boca Chica Trail, Thousand Palms, CA 92276

**FOR SALE**  
**\$1,600,000**  
**\$7.40/SF**



**Baxley**  
Properties, Inc.

www.baxleyproperties.com  
Phone: 760-773-3310  
Fax: 760-773-3013  
73712 Alessandro Drive, Ste B-4  
Palm Desert, CA 92260

**Zoning: MU (Mixed Use)**  
**Tremendous Highway Frontage**

**Tony Shepherd**  
tonys@baxleyproperties.com  
**Ofc: 760-773-6007**  
**Cell: 916-716-9453**  
DRE # 00578867

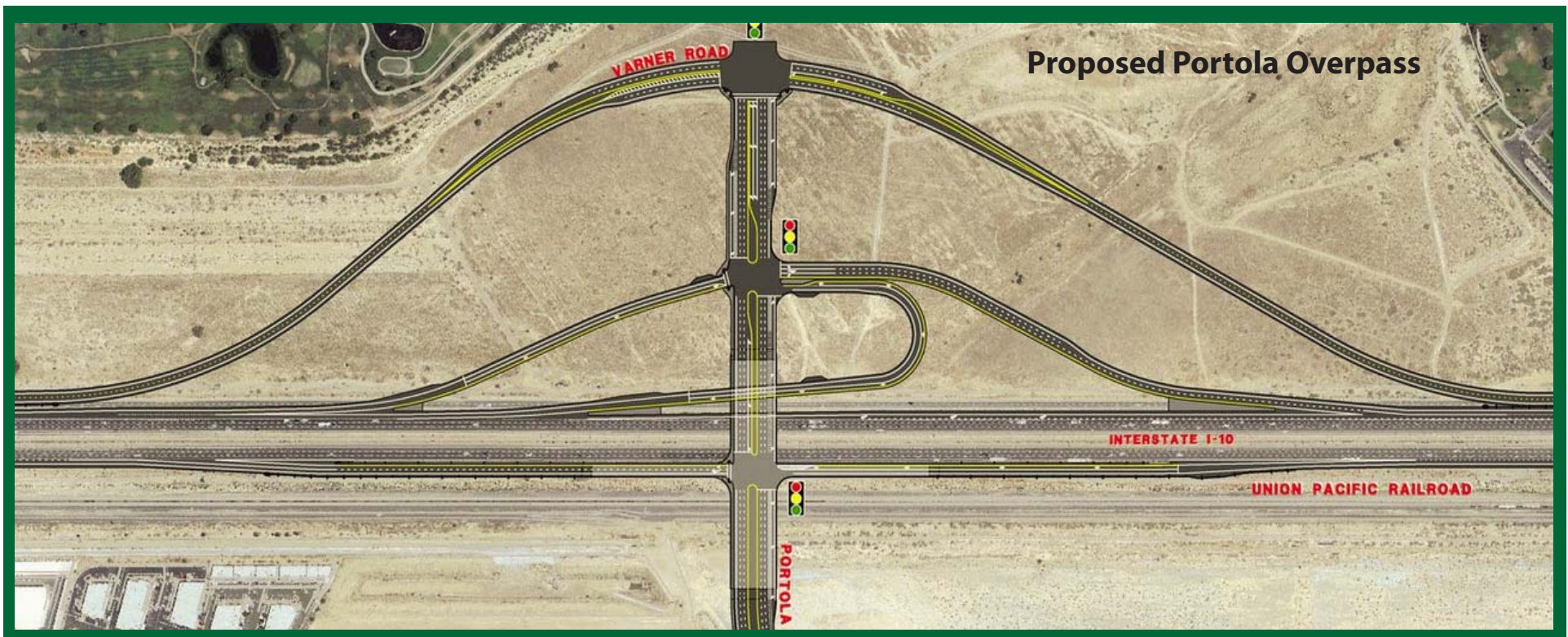
# 4.96 AC COMMERCIAL LAND FOR SALE

## NWC Varner Rd. & Boca Chica Trail, Thousand Palms, CA 92276

SALES PRICE: ..... \$1,600,000  
PRICE PER SF: ..... \$7.40/SF  
LOT SIZE: ..... 4.96 AC (216,058 SF)  
APN: ..... 693-230-019  
ZONING: ..... MU (Mixed Use)

### **Portola Interchange Project**

The County of Riverside and City of Palm Desert, propose to construct a new interchange on I-10 at Portola Avenue. Project includes the construction of new structure crossing I-10 and the Union Pacific Railroad, (on and off ramps). Auxiliary lanes in each direction of I-10 between the new Portola Avenue ramps and the adjacent interchanges at Cook Street and Monterey Avenue would also be constructed.

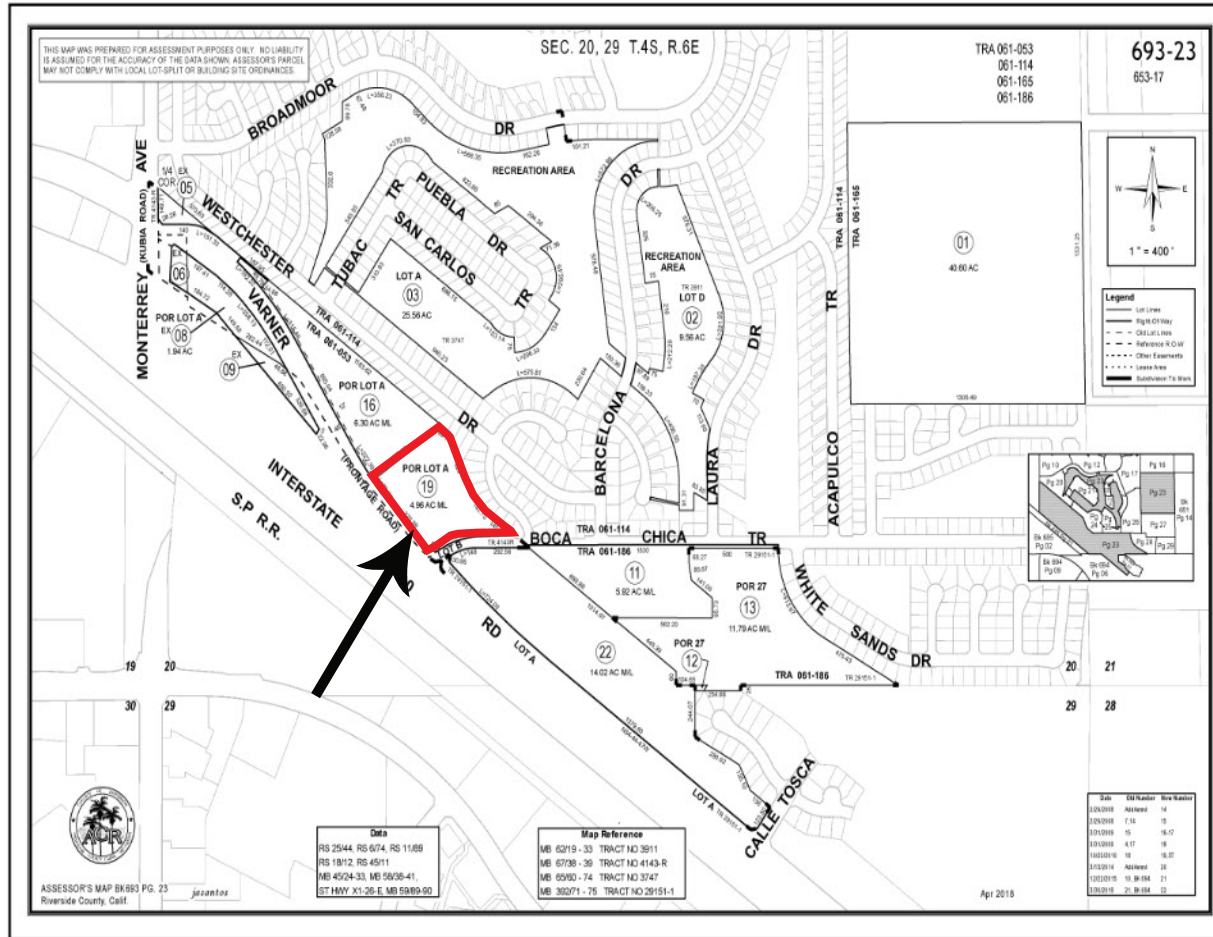


Disclaimer: Information has been secured from sources we believe to be reliable, however, Baxley Properties, Inc. cannot guarantee its accuracy.

# 4.96 AC COMMERCIAL LAND FOR SALE

NWC Varner Rd. & Boca Chica Trail, Thousand Palms, CA 92276

**PLAT MAP: APN: 693-230-019 - 4.96 Ac (216,058 SF)**



Disclaimer: Information has been secured from sources we believe to be reliable, however, Baxley Properties, Inc. cannot guarantee its accuracy.