

SYMMES SQUARE

8675 Fields Ertel Road, Cincinnati, OH 45249

1,250 SF+ Available for LEASE



Property Details:

- Less than ¼ mile from I-71 Interchange
- Located in Symmes Township; NO local earnings tax
- Located directly between two of Cincinnati's premier suburbs, Mason and Montgomery
- Over 7 million sf of retail and office space in trade area
- Growing residential area with many new luxury apartments and large single-family homes being built nearby
- New Drury Inn development across the street
- Dedicated stoplight access to property

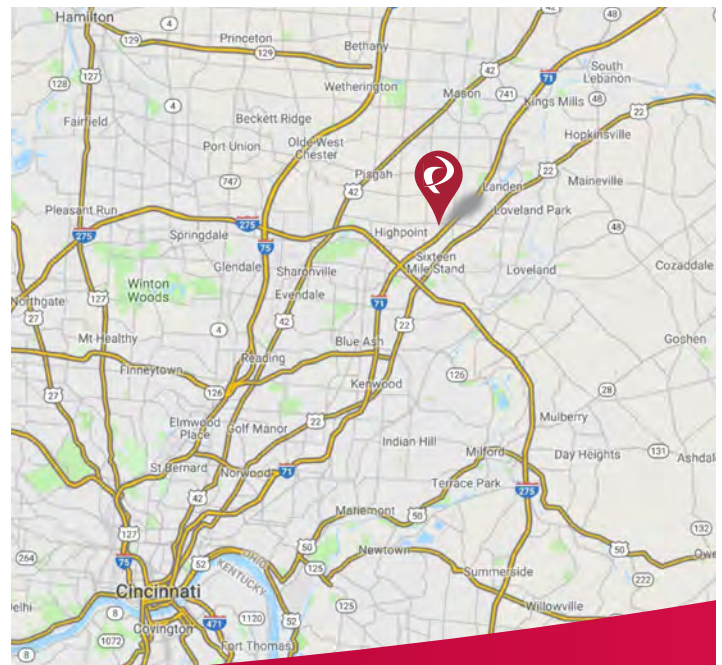
Demographics:

2018 Estimates	1 Mile	3 Mile	5 Mile
Population	5,542	64,803	144,858
Households	2,138	25,853	57,297
Median Household Income	\$89,775	\$93,797	\$96,389
Total Number of Employees	12,110	57,713	

Traffic Counts:

	ADT
Fields Ertel Road	20,492 (Warren Co. Engineer 2018)
I-71 at Fields Ertel Road	131,799 (ODOT 2017)

Contact: Zachary Schunn

513.489.3343 x5
zschunn@edgegp.com


LET US GIVE YOU AN EDGE

XTEAM
RETAIL ADVISORS

128 East Second Street | Suite B | Covington, KY 41011 | 513.489.3343 | edgegp.com

Proprietary to Edge Real Estate Group and confidential. Information contained herein has been obtained from sources deemed reliable, but is not guaranteed and is subject to change.



SYMMES SQUARE
8675 Fields Ertel Road, Cincinnati, OH 45249

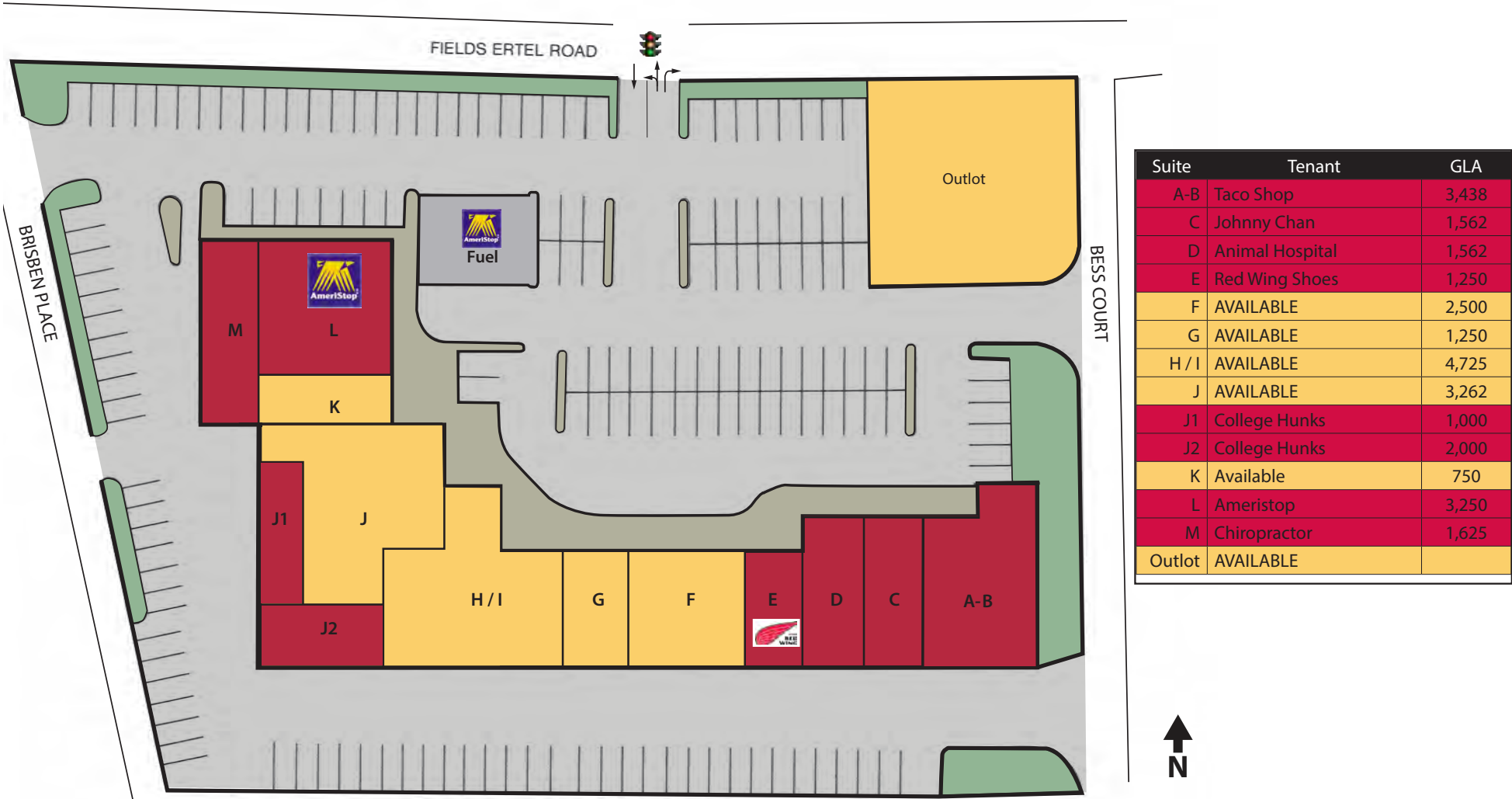


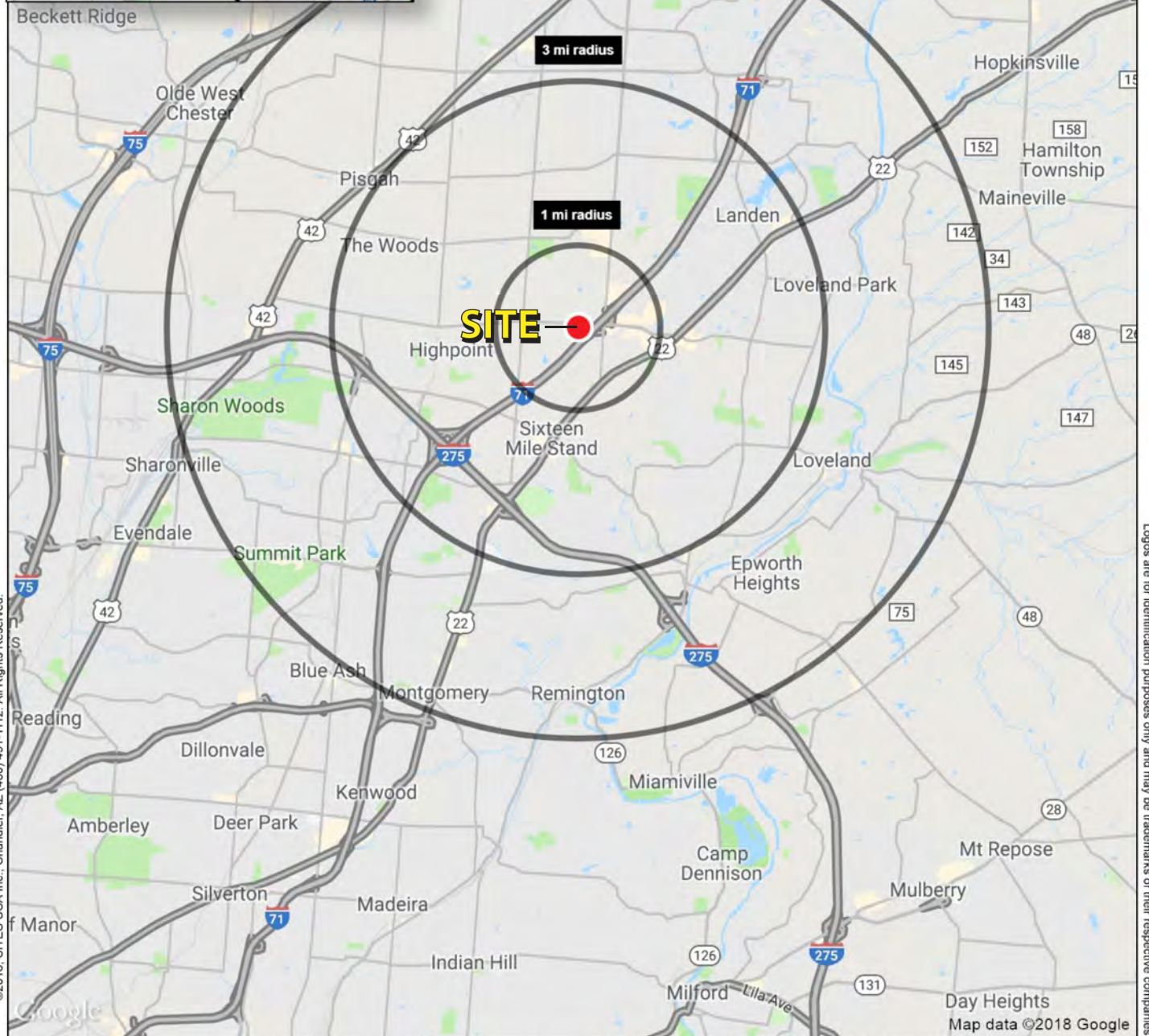
128 East Second Street | Suite B | Covington, KY 41011 | 513.489.3343 | edgegp.com

Proprietary to Edge Real Estate Group and confidential. Information contained herein has been obtained from sources deemed reliable, but is not guaranteed and is subject to change.



SYMMES SQUARE
8675 Fields Ertel Road, Cincinnati, OH 45249





©2018, SITES USA Inc., Chandler, AZ (480) 491-1112. All Rights Reserved.

Lat: 39.29603 Long: -84.32288 Zoom: 13.71 mi

Logos are for identification purposes only and may be trademarks of their respective companies

128 East Second Street | Suite B | Covington, KY 41011 | 513.489.3343 | edgegp.com

Proprietary to Edge Real Estate Group and confidential. Information contained herein has been obtained from sources deemed reliable, but is not guaranteed and is subject to change.

SUMMARY PROFILE

2000-2010 Census, 2018 Estimates with 2023 Projections

Calculated using Weighted Block Centroid from Block Groups

Lat/Lon: 39.2922/-84.3215

RS1

8675 Fields Ertel Rd		1 mi radius	3 mi radius	5 mi radius
Cincinnati, OH 45249				
POPULATION	2018 Estimated Population	5,542	64,803	144,858
	2023 Projected Population	5,665	66,411	148,376
	2010 Census Population	4,870	61,457	139,554
	2000 Census Population	4,301	54,412	128,094
	Projected Annual Growth 2018 to 2023	0.4%	0.5%	0.5%
	Historical Annual Growth 2000 to 2018	1.6%	1.1%	0.7%
	2018 Median Age	35.6	38.6	40
HOUSEHOLDS	2018 Estimated Households	2,138	25,853	57,297
	2023 Projected Households	2,196	26,663	59,059
	2010 Census Households	1,837	23,939	53,751
	2000 Census Households	1,528	19,922	47,137
	Projected Annual Growth 2018 to 2023	0.5%	0.6%	0.6%
	Historical Annual Growth 2000 to 2018	2.2%	1.7%	1.2%
RACE AND ETHNICITY	2018 Estimated White	68.0%	80.5%	83.4%
	2018 Estimated Black or African American	9.2%	4.9%	4.5%
	2018 Estimated Asian or Pacific Islander	16.4%	10.8%	8.7%
	2018 Estimated American Indian or Native Alaskan	0.2%	0.1%	0.1%
	2018 Estimated Other Races	6.1%	3.7%	3.3%
	2018 Estimated Hispanic	6.1%	4.4%	3.9%
INCOME	2018 Estimated Average Household Income	\$131,604	\$126,116	\$123,777
	2018 Estimated Median Household Income	\$89,775	\$93,797	\$96,389
	2018 Estimated Per Capita Income	\$50,766	\$50,335	\$48,998
EDUCATION (AGE 25+)	2018 Estimated Elementary (Grade Level 0 to 8)	3.1%	1.4%	1.5%
	2018 Estimated Some High School (Grade Level 9 to 11)	1.2%	2.9%	3.1%
	2018 Estimated High School Graduate	11.3%	17.2%	19.4%
	2018 Estimated Some College	15.5%	15.8%	16.3%
	2018 Estimated Associates Degree Only	6.2%	7.4%	7.1%
	2018 Estimated Bachelors Degree Only	33.5%	32.0%	31.3%
	2018 Estimated Graduate Degree	29.2%	23.3%	21.4%
BUSINESS	2018 Estimated Total Businesses	599	3,587	8,314
	2018 Estimated Total Employees	12,110	57,713	118,657
	2018 Estimated Employee Population per Business	20.2	16.1	14.3
	2018 Estimated Residential Population per Business	9.3	18.1	17.4

This report was produced using data from private and government sources deemed to be reliable. The information herein is provided without representation or warranty.

SYMMES SQUARE

8675 Fields Ertel Road, Cincinnati, OH 45249

1,250 SF+ Available for LEASE



Contact:
Zachary Schunn

513.489.3343 x5
zschunn@edgegp.com

128 East Second Street
Suite B
Covington, KY 41011
513.489.3343
edgegp.com

LET US GIVE YOU AN EDGE



128 East Second Street | Suite B | Covington, KY 41011 | 513.489.3343 | edgegp.com

Proprietary to Edge Real Estate Group and confidential. Information contained herein has been obtained from sources deemed reliable, but is not guaranteed and is subject to change.