



For Sale

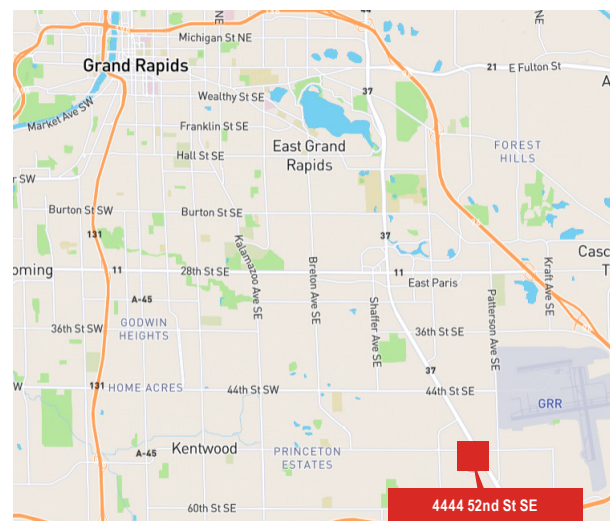
Property Highlights

- PP# 41.18.36.200.033
- Price: \$6,700,000
- 122,605 SF Food Grade Production/Packaging Facility
- Built in 1974, Remodeled in 1996
- Very well maintained, room to expand
- Close to major expressways
- 20.99 Acres
- 9,930 SF Office
- 28-45' Clear Height
- 17 Loading Docks, 2 Overhead Doors
- SEV \$2,499,400
- TEV \$2,109,597
- Parking: 285 cars, 68 trailers
- 2-2000 Amp 3ph 480V Power
- 100% Temperature Controlled
- Fire Pump- Diesel Powered
- 2018 Summer Taxes: \$85,713.33
- 2018 Winter Taxes: \$32,689.24

**4444 52nd St SE,
Kentwood, MI**

Bob Horn, SIOR
+1 616 649 3533
bob.horn@am.jll.com

jll.com/grandrapids

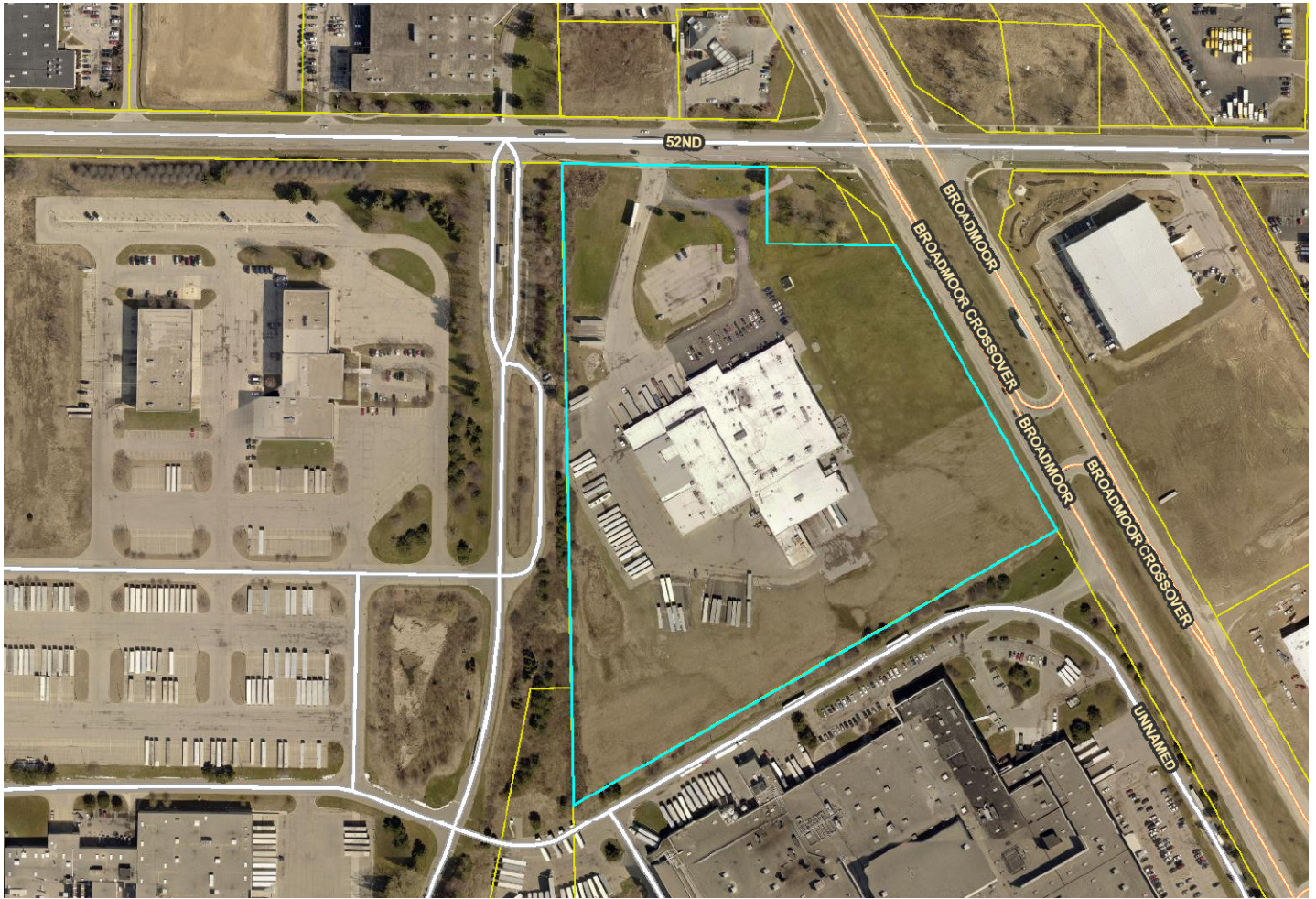


Building Photos

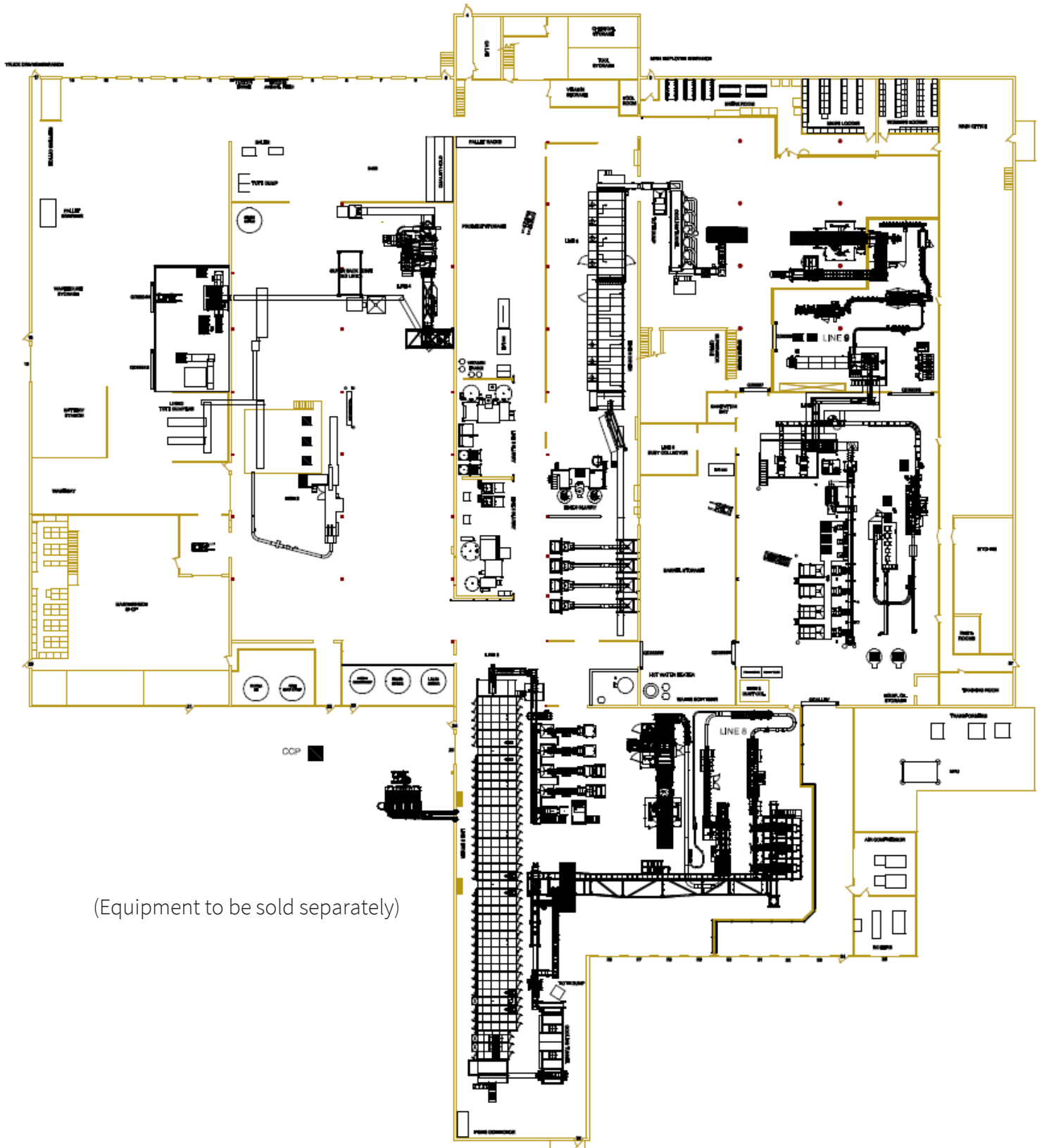


(Equipment to be sold separately)

Plat Map



Floor Plan



(Equipment to be sold separately)