

FOR LEASE
2,920 SF ±
OFFICE SPACE
Mobile, AL



Professional Office Bldg. with Airport Blvd. Frontage

4728 Airport Blvd.
Mobile, AL 36608

Property Features

- Available: 2,920 ± sf
- Building Size: 5,840 ± sf
- Parking: 25 ± spaces
- Zoning: B-1
- Year Built: 1977
- Two story building with 100ft of frontage
- Second floor available for lease;
Bay Area Endodontics occupies first floor

LEASE PRICE: \$12.00/sf/yr NNN
***ALSO FOR SALE**



For more information:

Jay Roberds

251.753.1015 cell/
jay@nai-mobile.com

NO WARRANTY OR REPRESENTATION, EXPRESS OR IMPLIED, IS MADE AS TO THE ACCURACY OF THE INFORMATION CONTAINED HEREIN, AND THE SAME IS SUBMITTED SUBJECT TO ERRORS, OMISSIONS, CHANGE OF PRICE, RENTAL OR OTHER CONDITIONS, PRIOR SALE, LEASE OR FINANCING, OR WITHDRAWAL WITHOUT NOTICE, AND OF ANY SPECIAL LISTING CONDITIONS IMPOSED BY OUR PRINCIPALS NO WARRANTIES OR REPRESENTATIONS ARE MADE AS TO THE CONDITION OF THE PROPERTY OR ANY HAZARDS CONTAINED THEREIN ARE ANY TO BE IMPLIED.

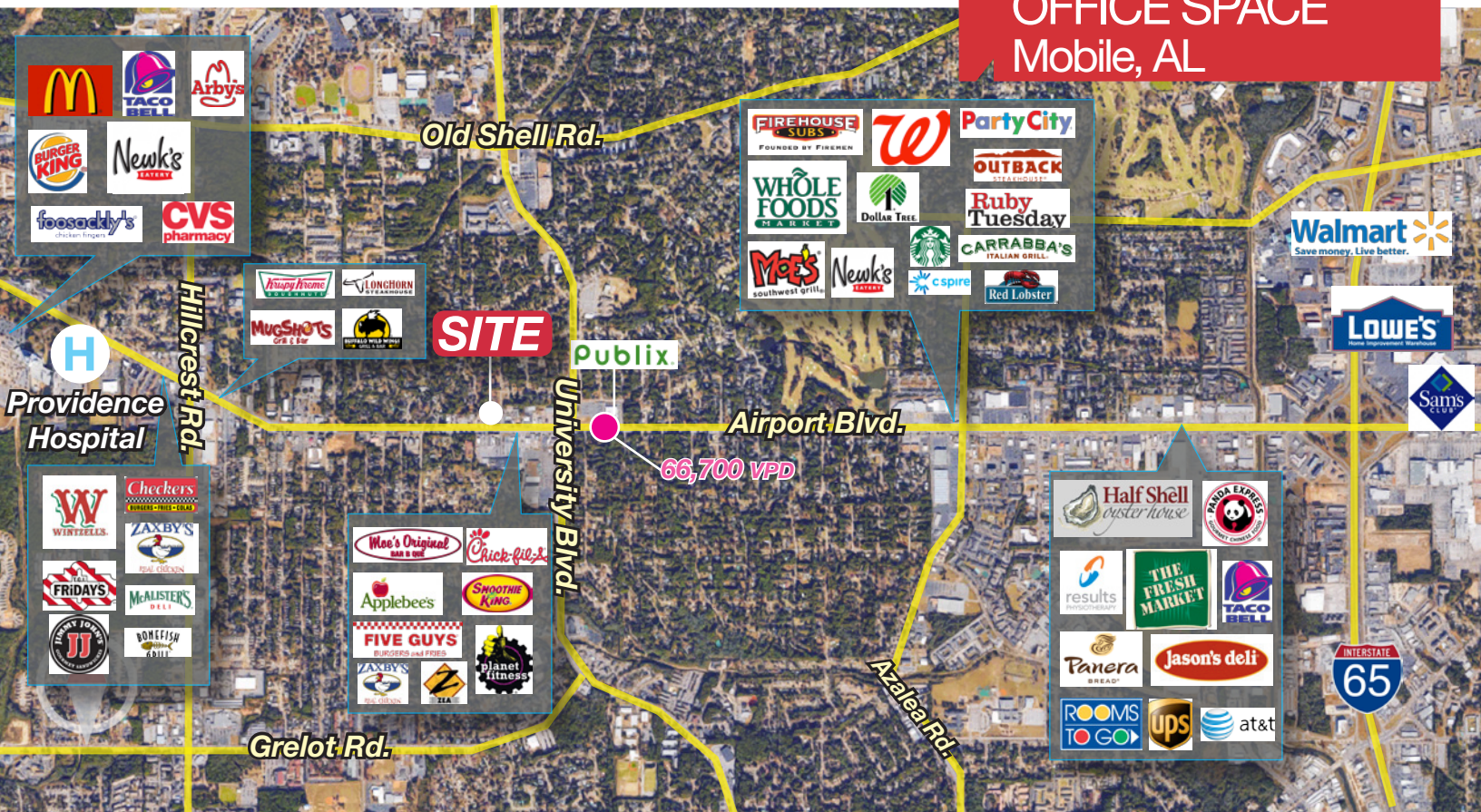
56 St. Emanuel St.
Mobile, AL
251.438.4312

www.nai-mobile.com

FOR LEASE

OFFICE SPACE

Mobile, AL



Location Description:

The subject site is located on a major retail corridor in the west Mobile submarket. The location is densely populated and provides abundant restaurant options, retail, banks, grocery stores and other various offices and services. It is convenient to I-65 and I-10, Providence Hospital, Mobile Regional Airport, and all the amenities of West Mobile and Midtown Mobile.

Providence Hospital	2.0 miles
I-65	3.1 miles
Mobile Regional Airport	4.4 miles
HWY 90	4.6 miles
I-10	6.3 miles
Downtown Mobile	12.9 miles
Spanish Fort, AL	20.8 miles
Daphne, AL	21.1 miles



For more information:

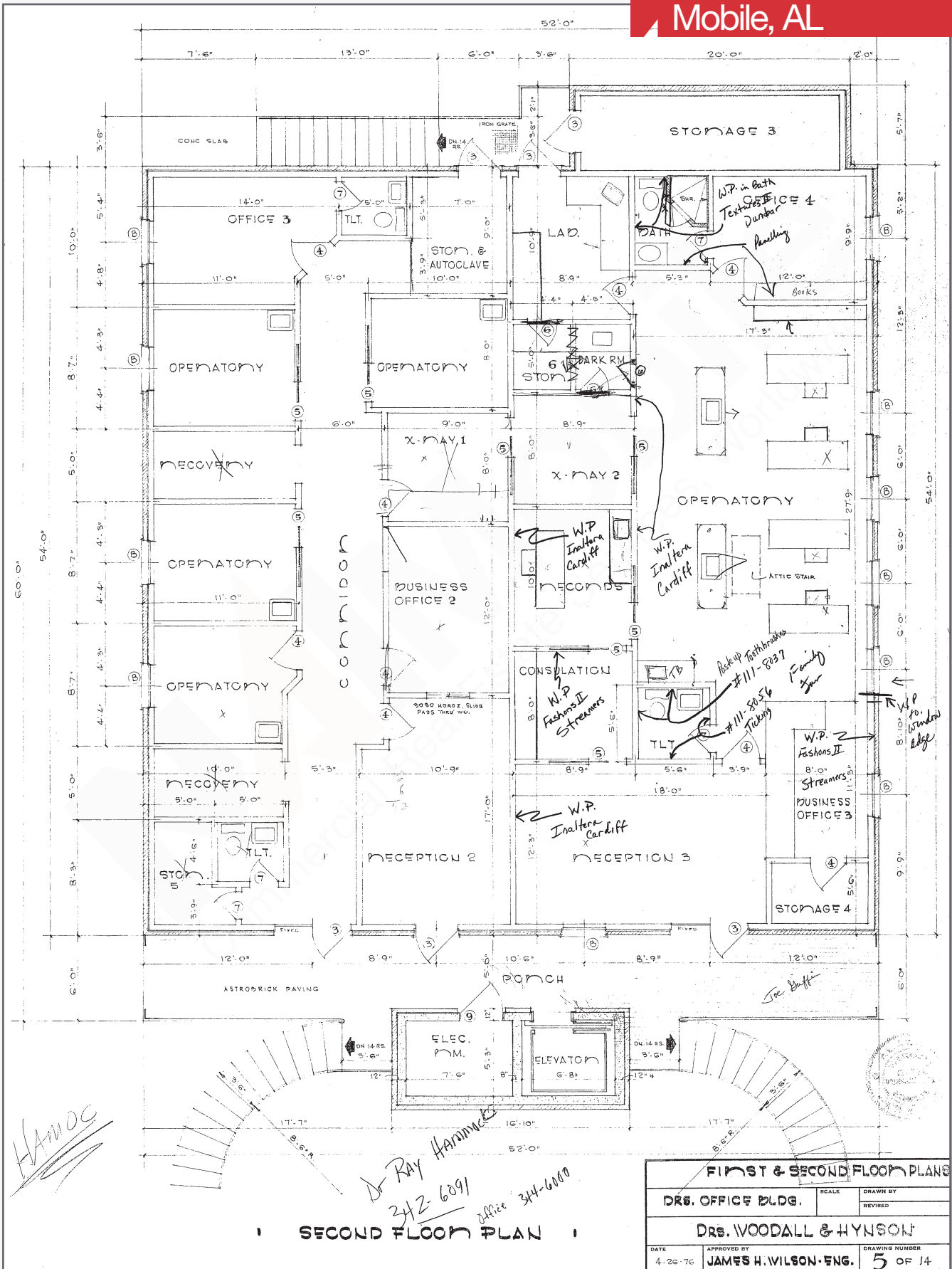
Jay Roberds

251.753.1015 cell
jay@nai-mobile.com

FOR LEASE

OFFICE SPACE

Mobile, AL



FOR LEASE
OFFICE SPACE
Mobile, AL

